

PROYECTO DE ESCUELA Y VIVIENDAS PARA MAESTROS EN CORIA DEL RIO
=====

P L A N O S

ARQUITECTO:
FERNANDO BARQUIN Y BARON

PLAN DE ZONIFICACION Y VIVIENDAS PARA LA CIUDAD DE
SANTA CRUZ DE LA SIERRA

CALLE



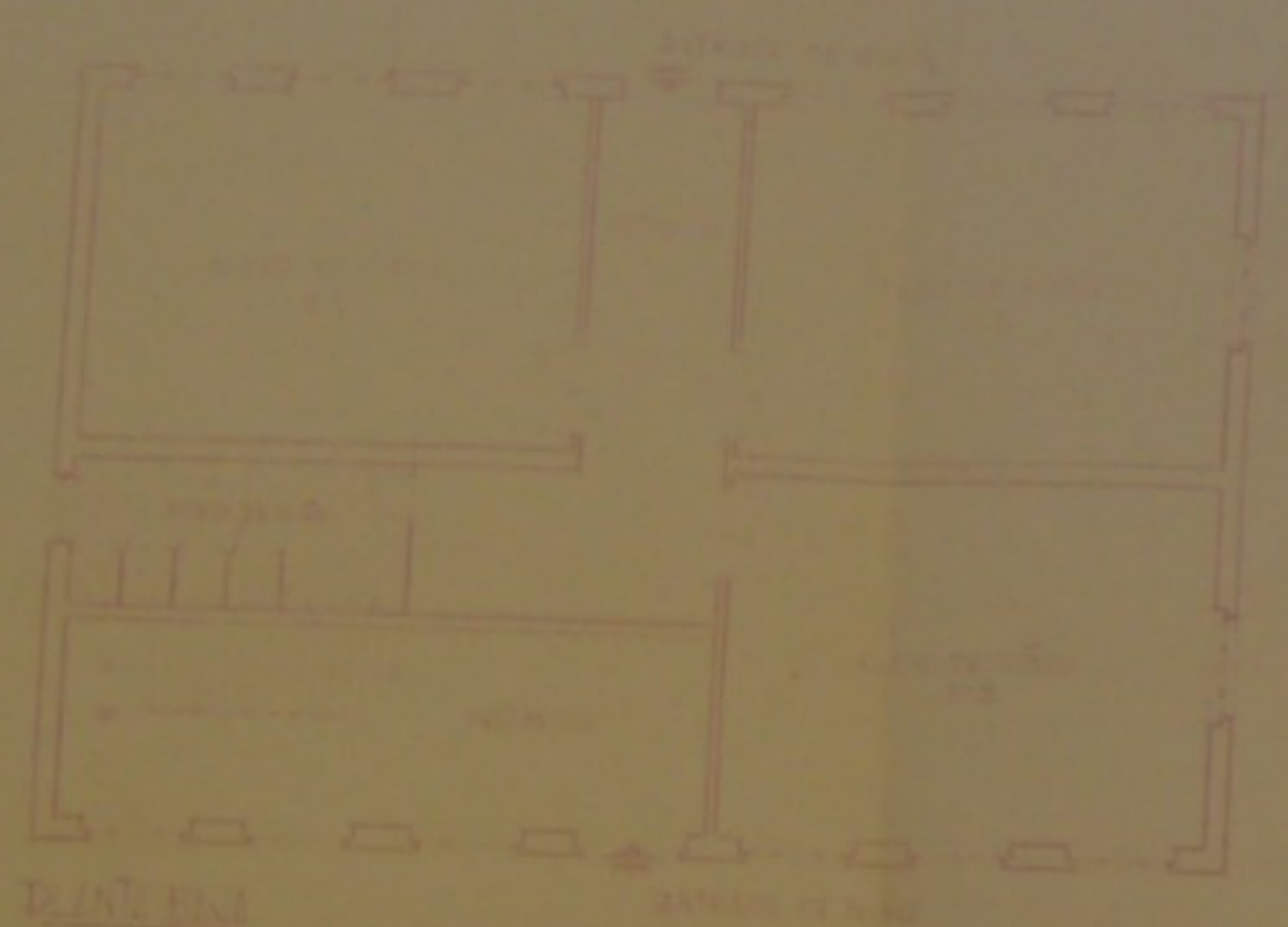
CALLE



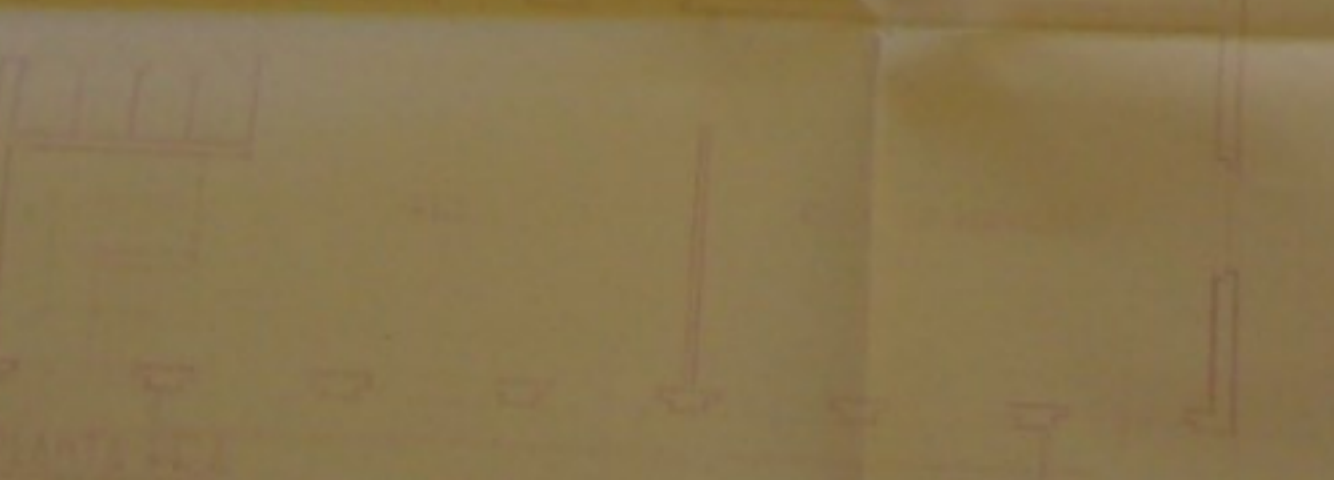
SEPTIEMBRE 1954
EL ARQUITECTO

FERNANDO BARQUIN
Y BARON

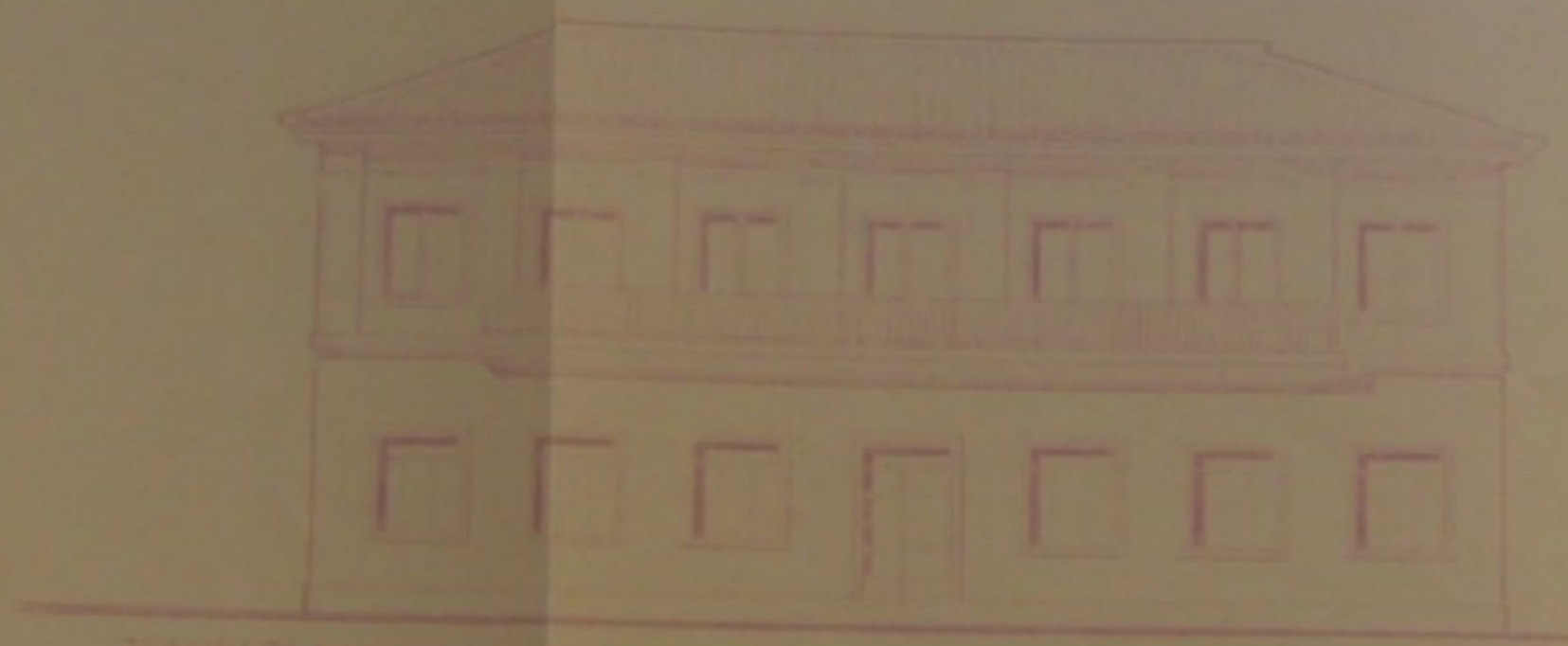
PLANTA DE SECCION EN LONGITUD



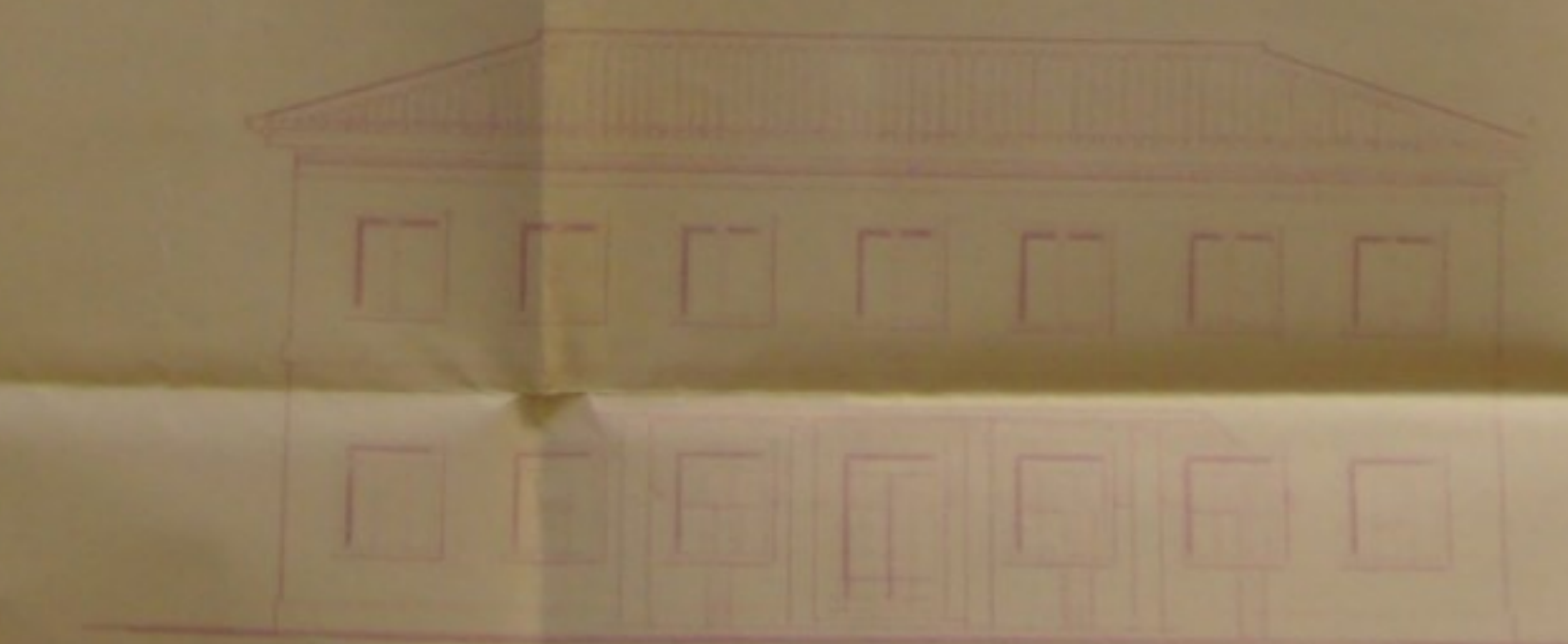
PLANTA EN



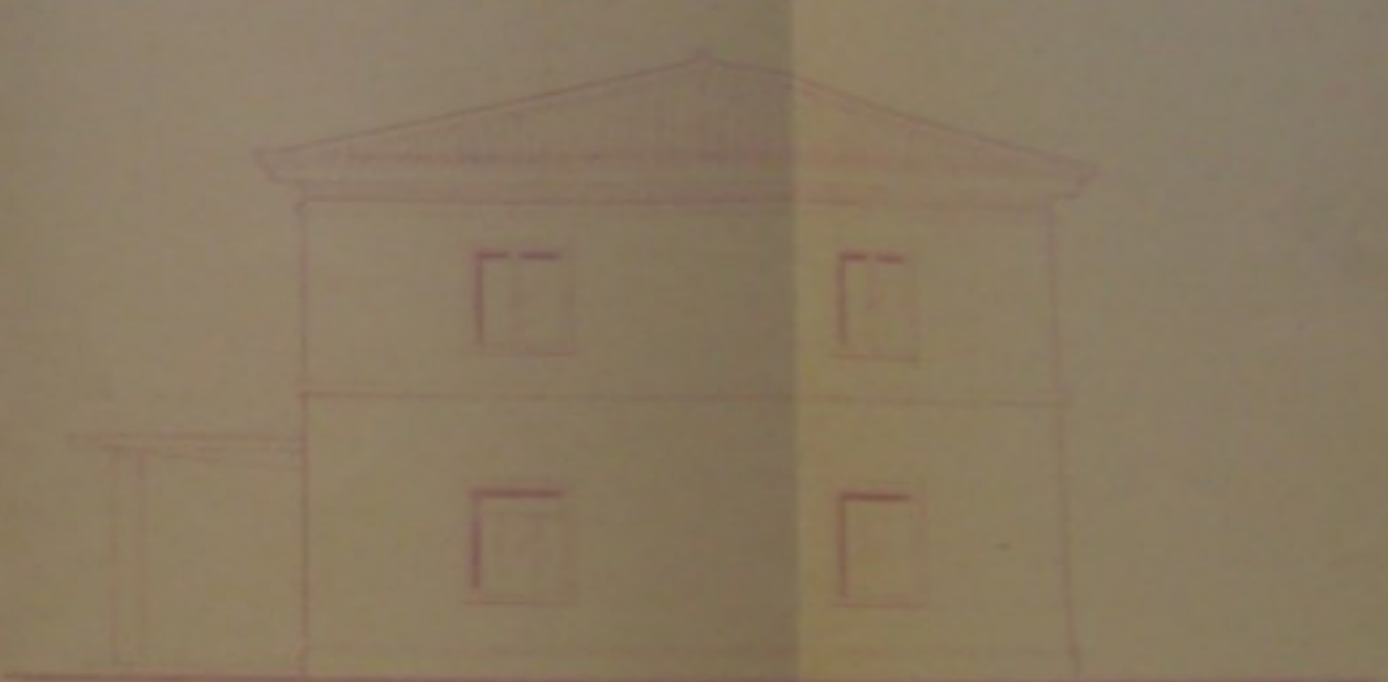
PLANTA EN



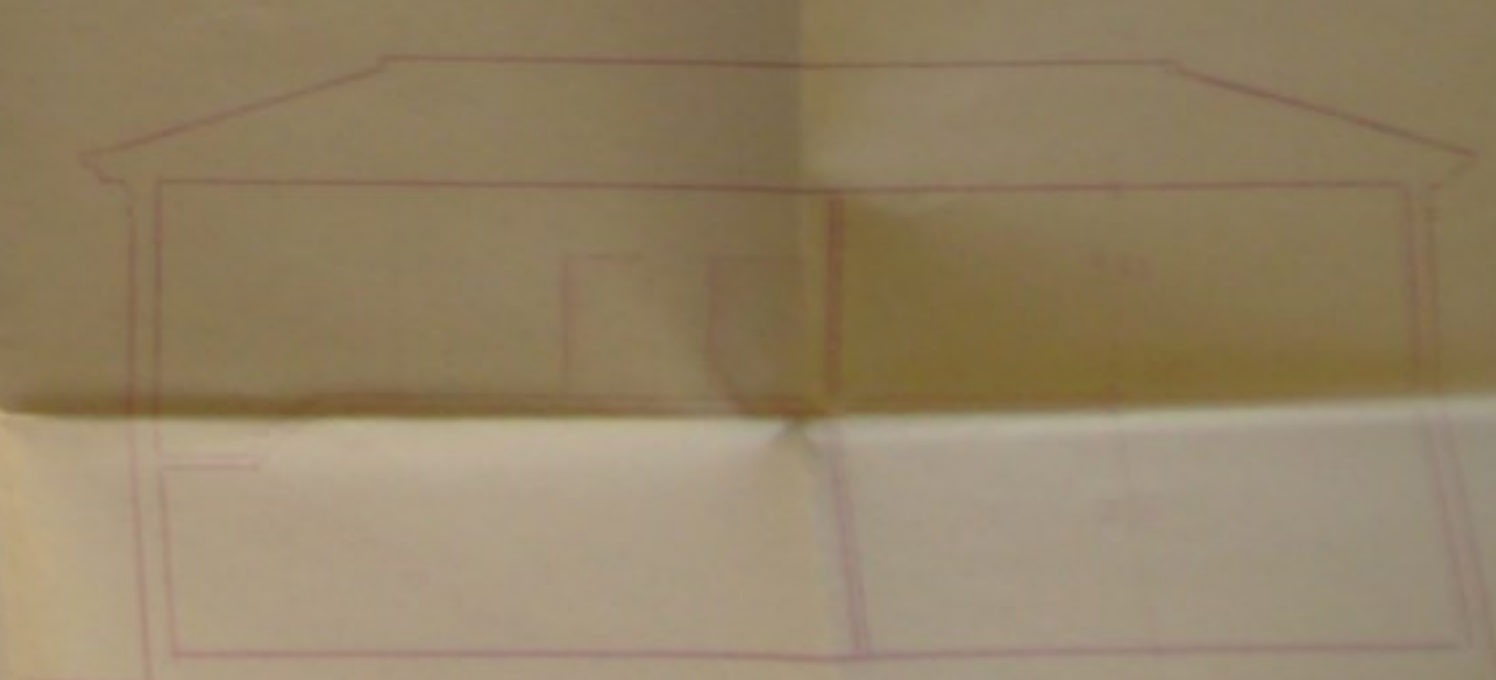
PLANTA EN



PLANTA EN



PLANTA EN



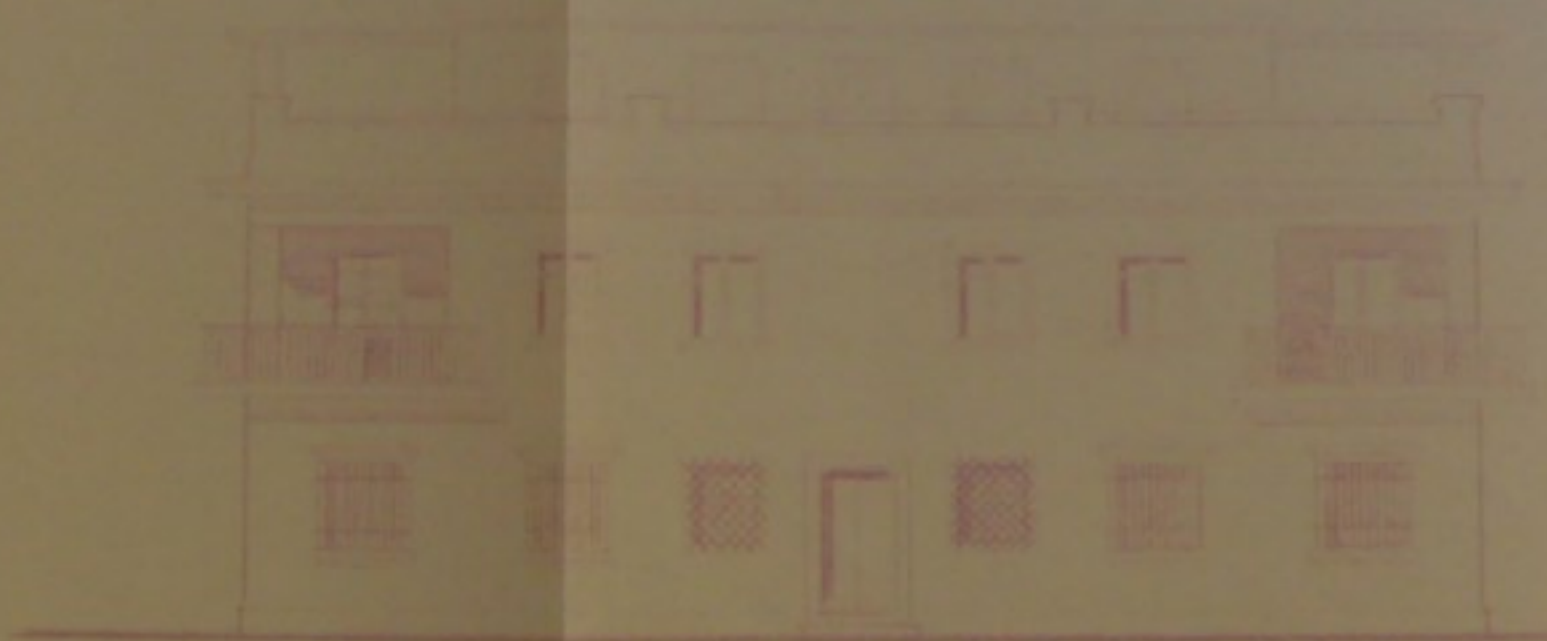
PLANTA EN

FERRAZZI BARRA
Y BARRA
ARQUITECTO

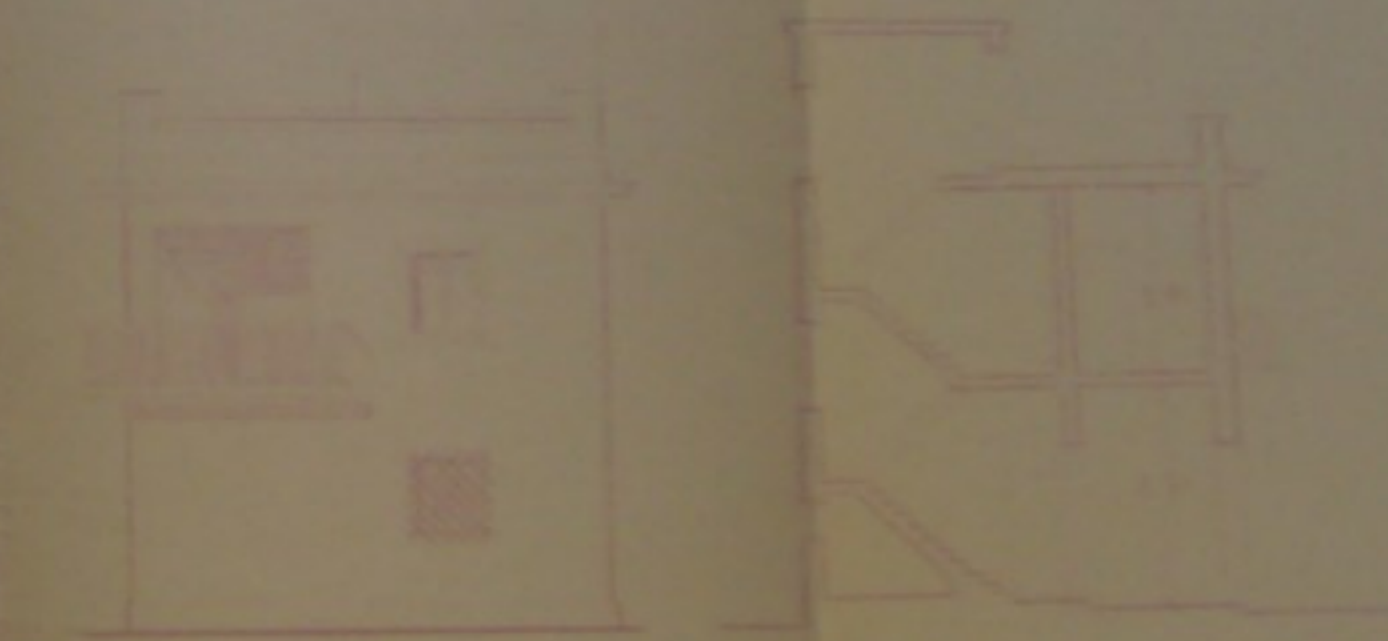
PROGETTO DI PAVIMENTO PER LA CANTINA DI S. MARIA DELLA GROTTA
1911 D.M.C.



PIANTA 1^a



FRONTE



FRONTE



PIANTA 2^a

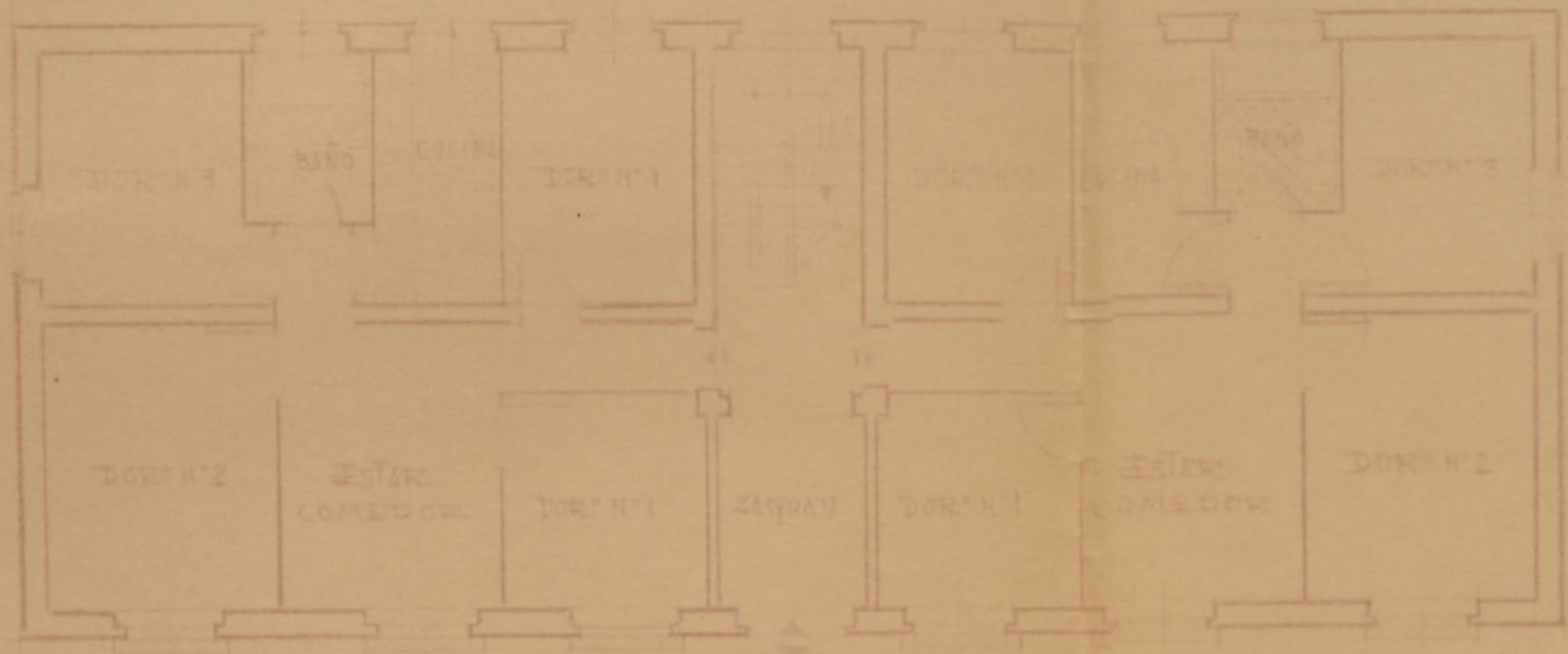


PIANTA



PIANTA 3^a

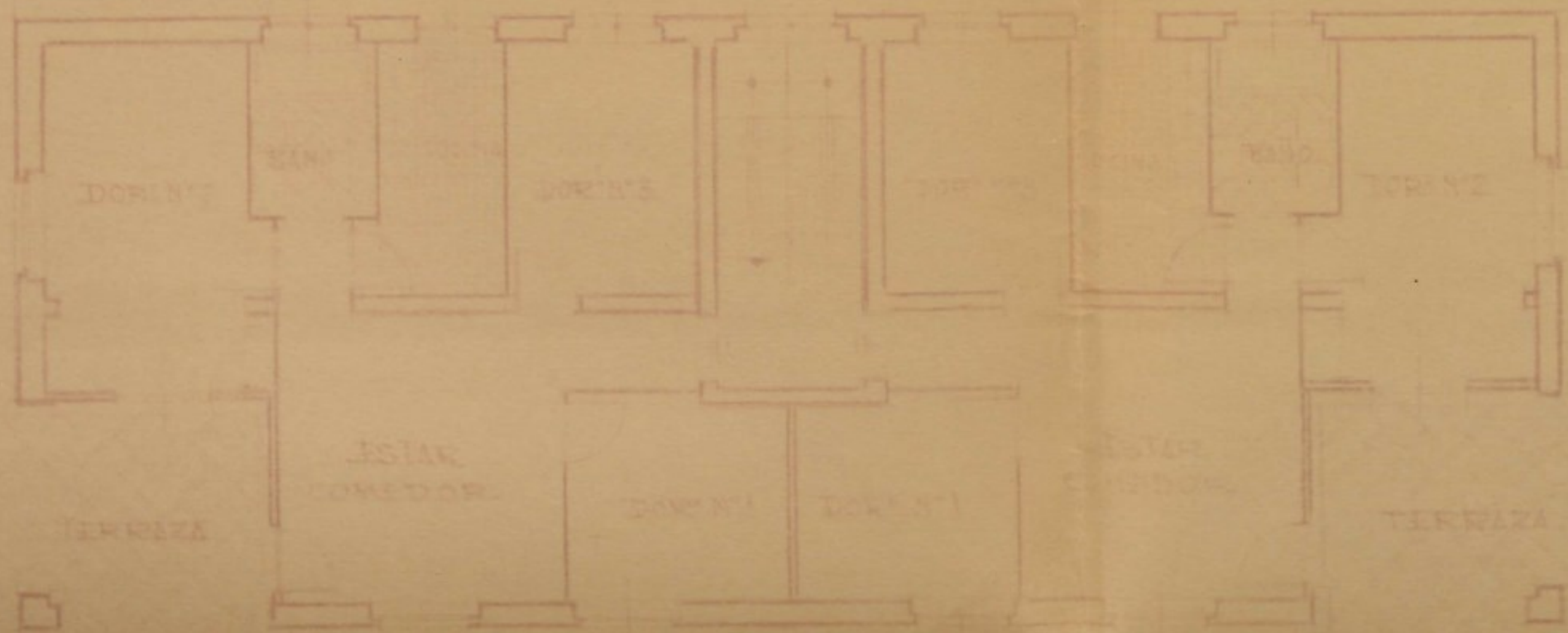
PROGETTO E REDATTO
DALL'INGEGNERE
DOTT. G. M. C.



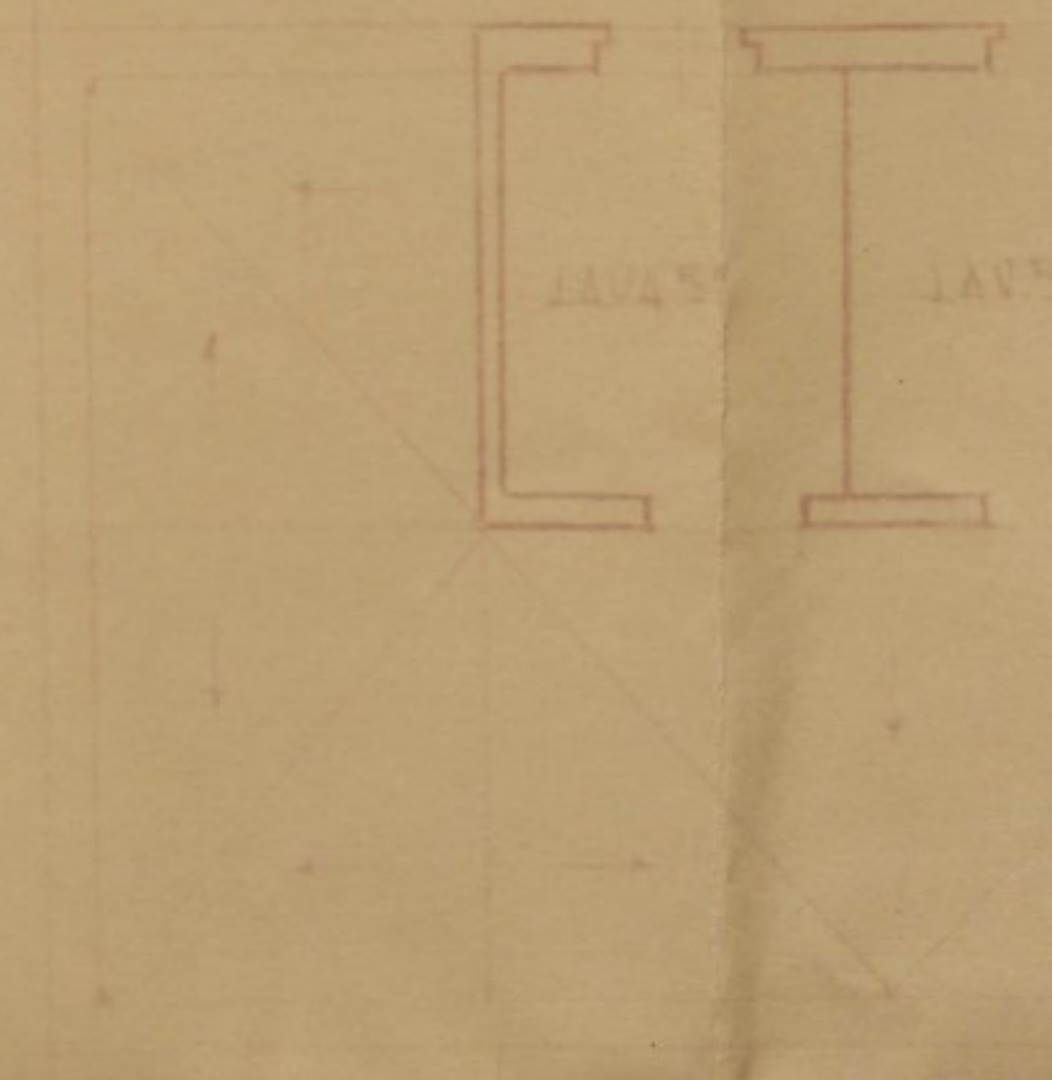
PIANTA 1st.



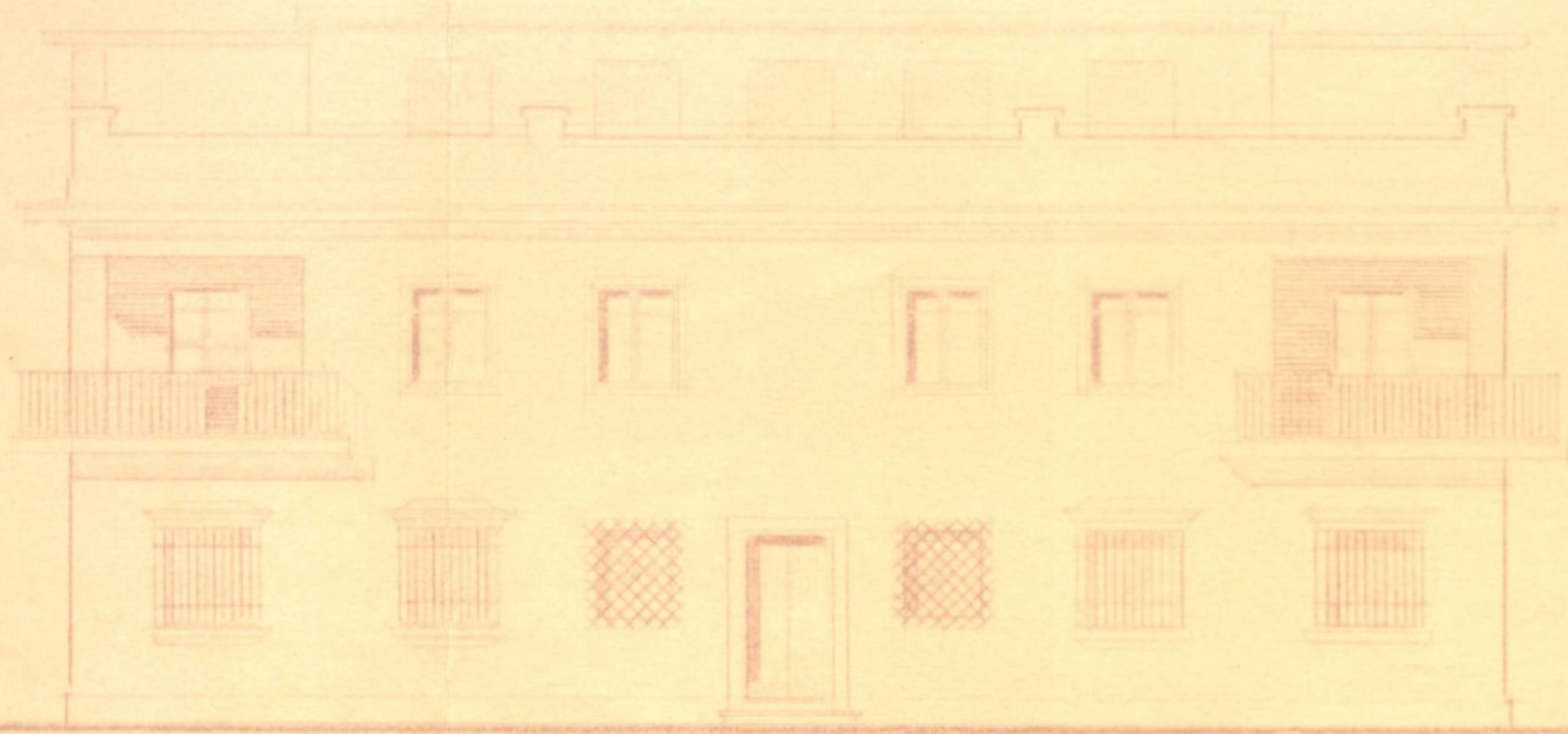
PRIMERA PANT.



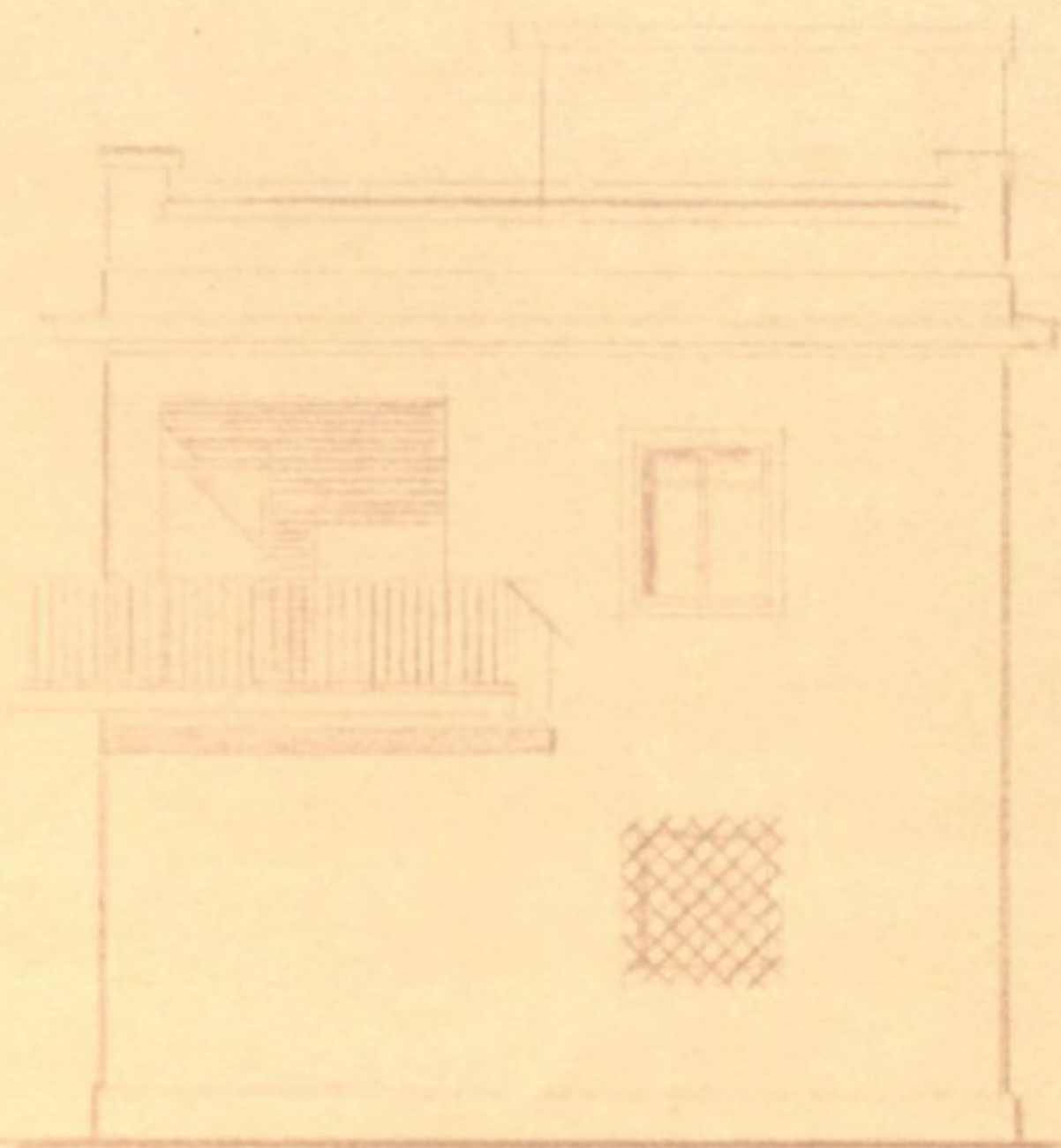
PIANTA 2nd.



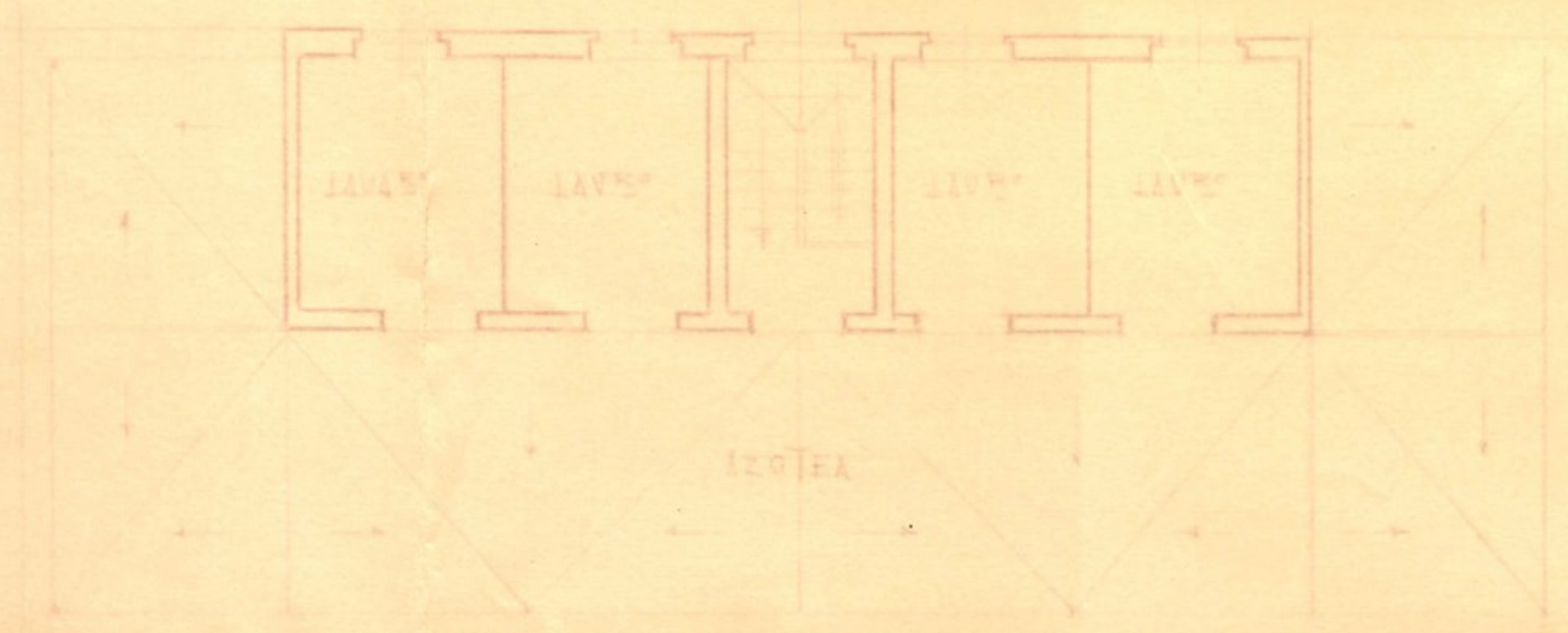
SEGUNDA PANT.



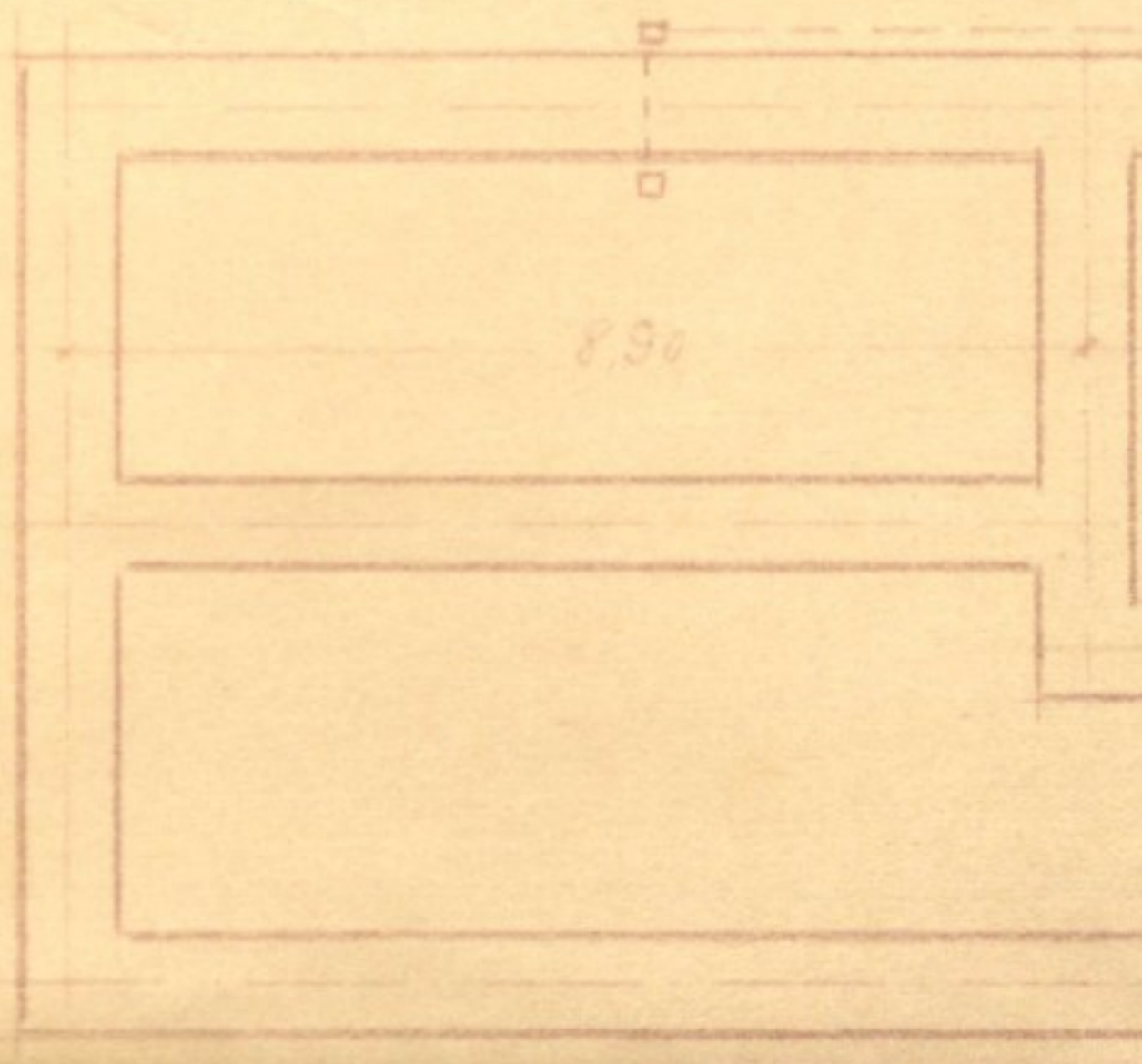
FACHADA PRAL



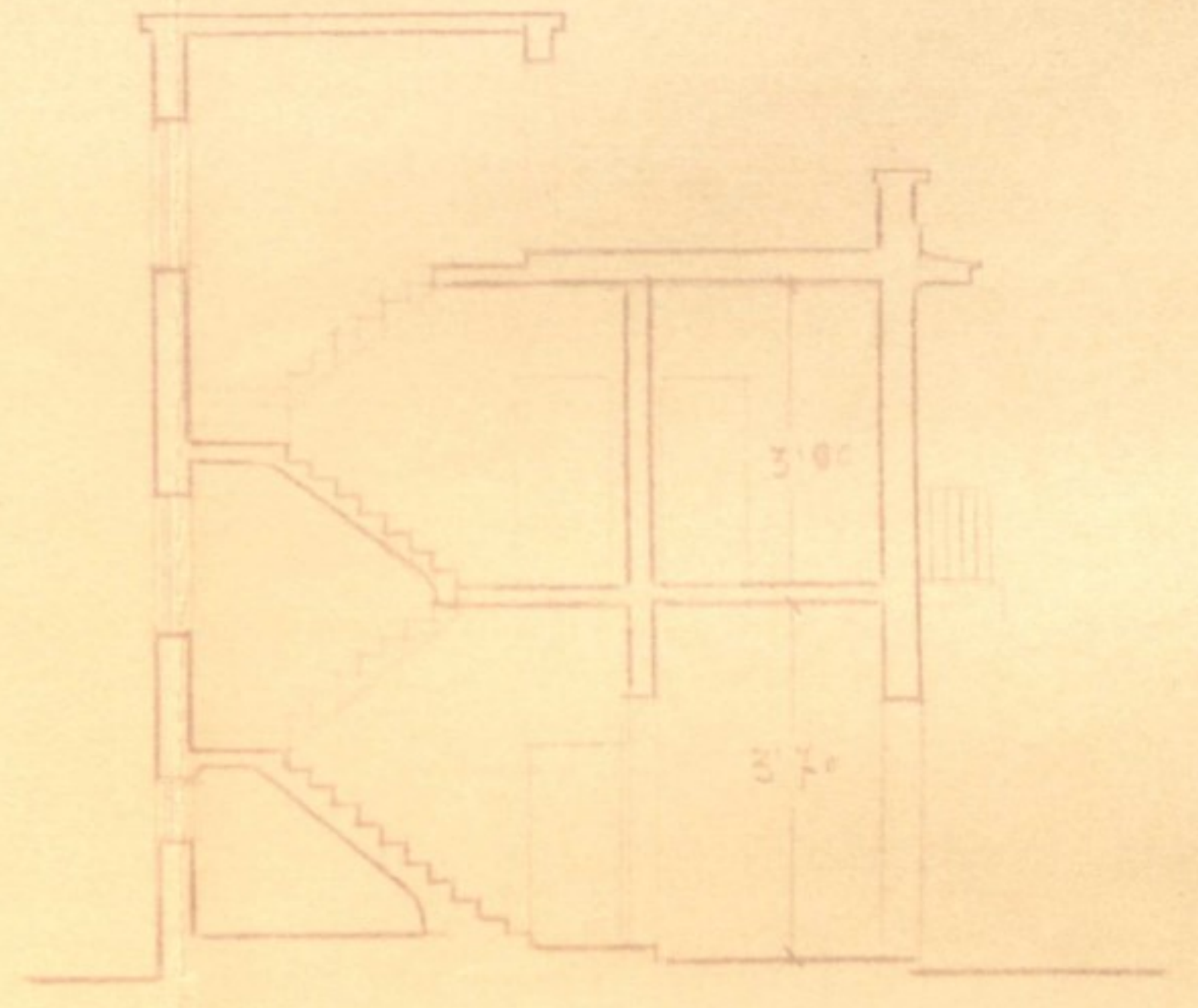
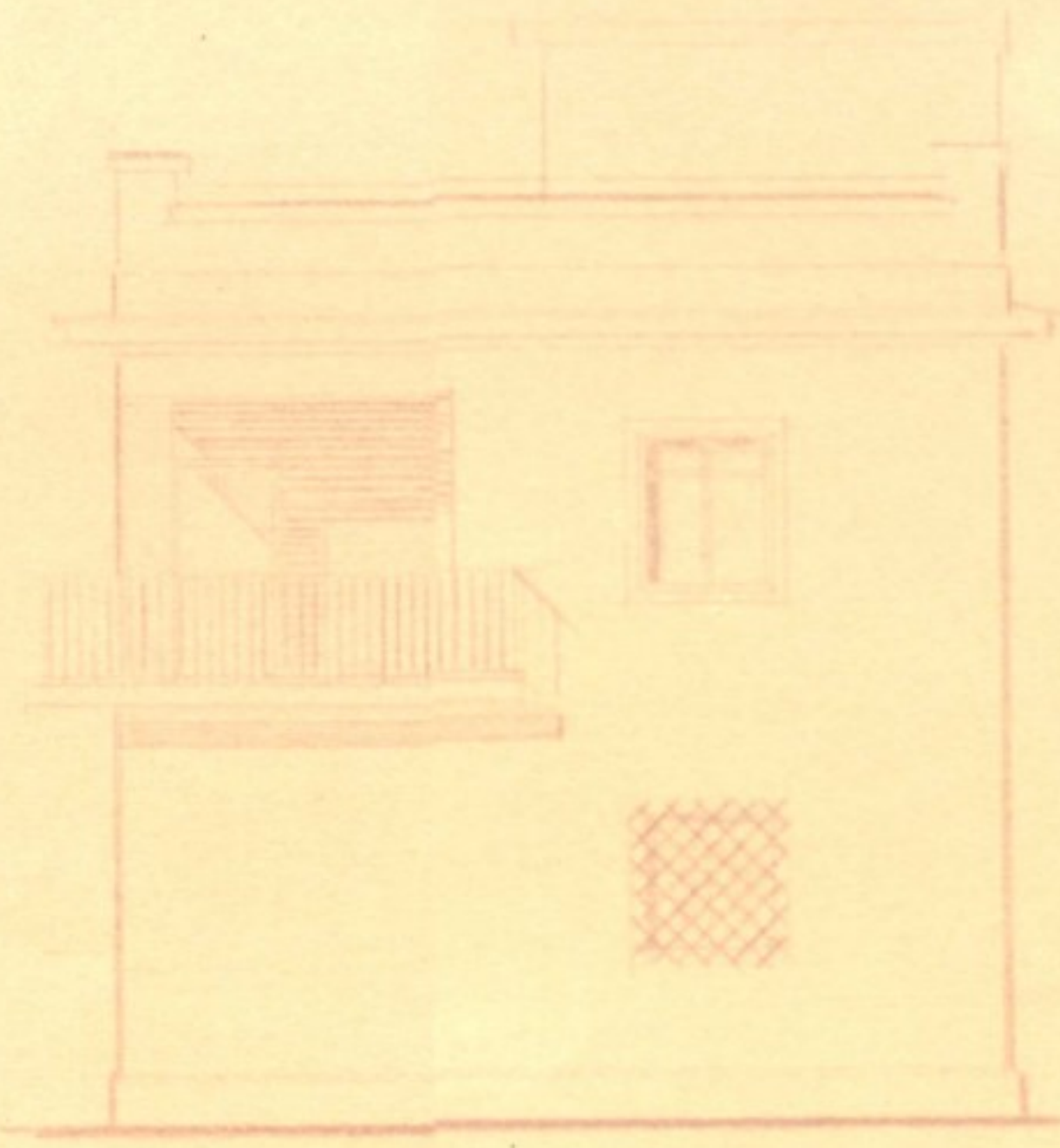
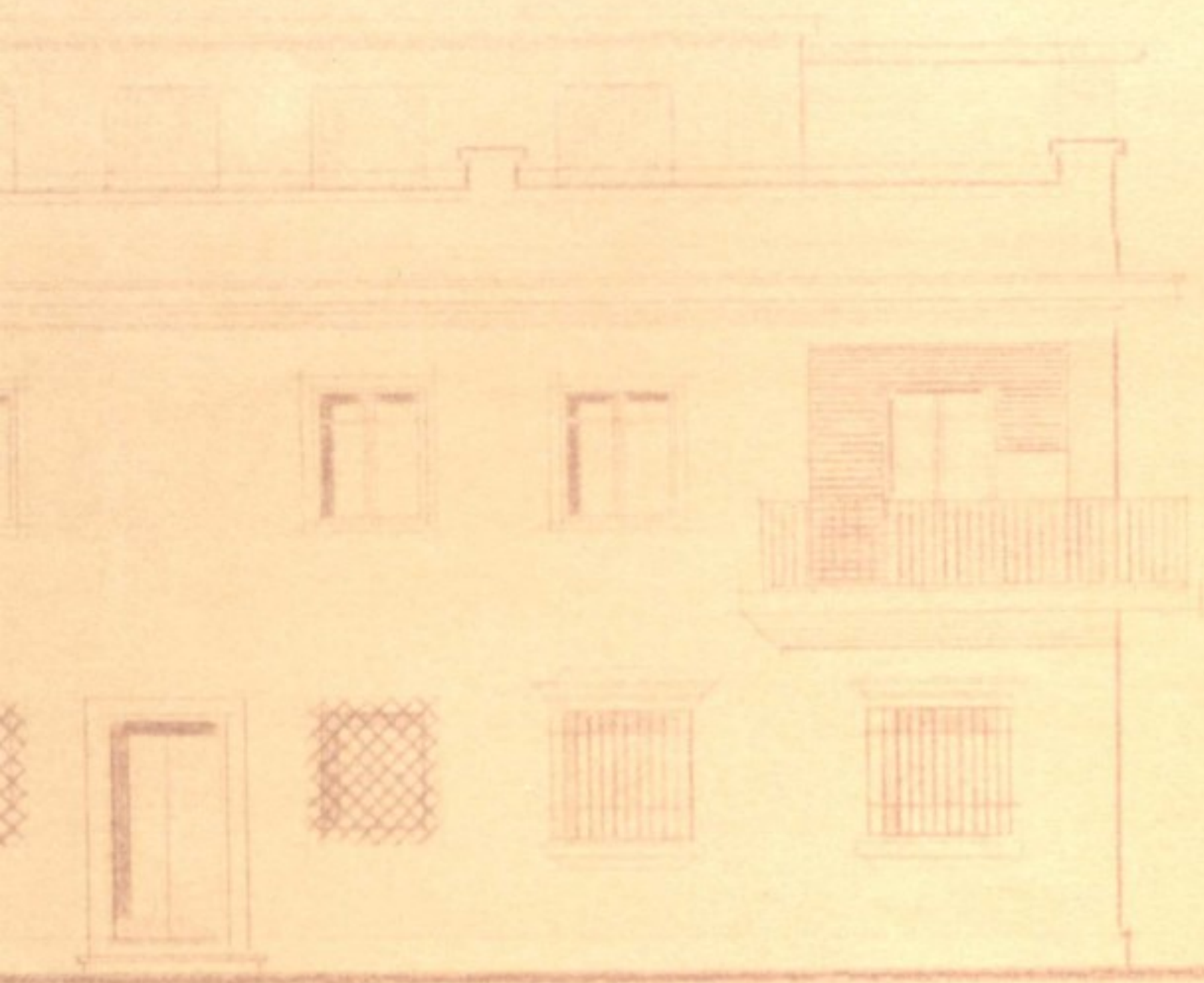
FACHADA LATERAL



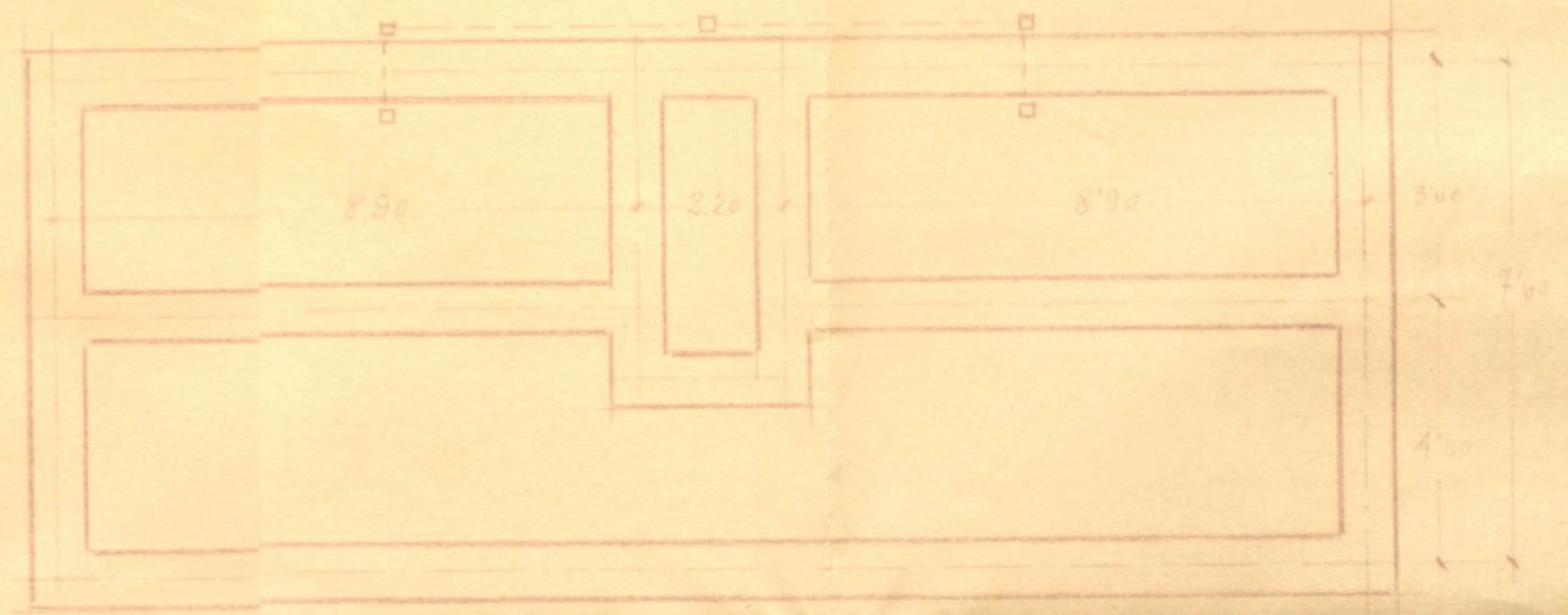
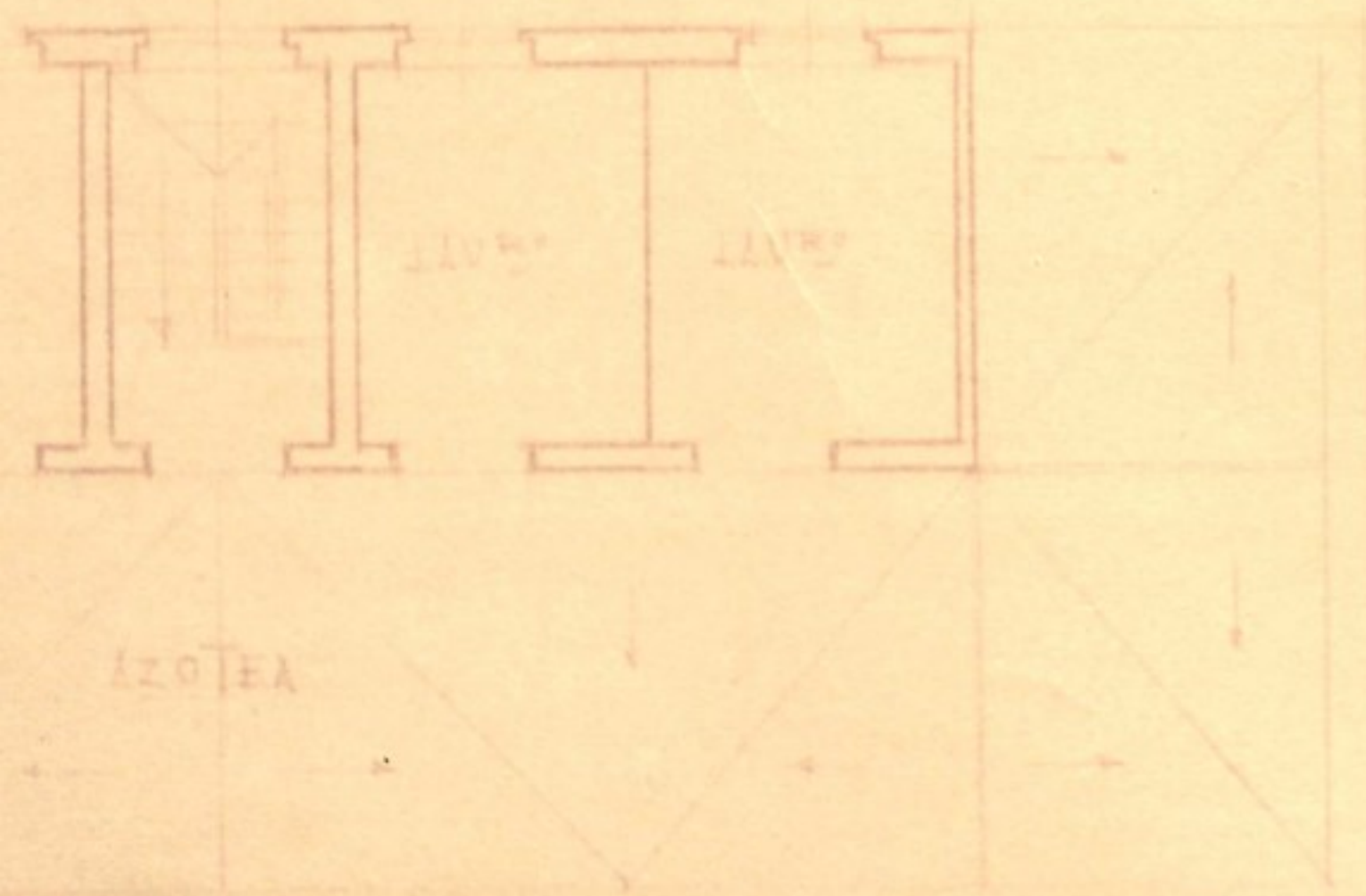
PIANTA DE AZOTEA



PIANTA DE CIMIENTOS



FACHADA LATERAL.

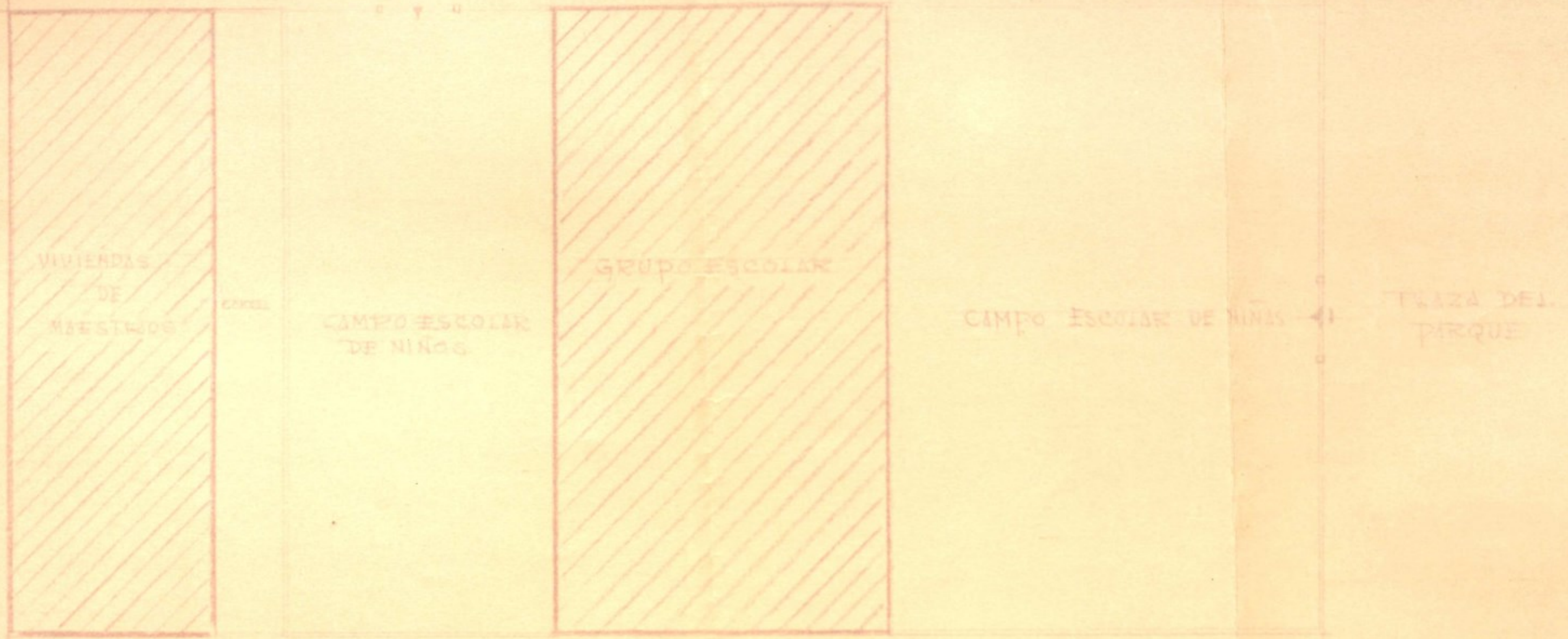


PLANTA DE CIMENTOS.

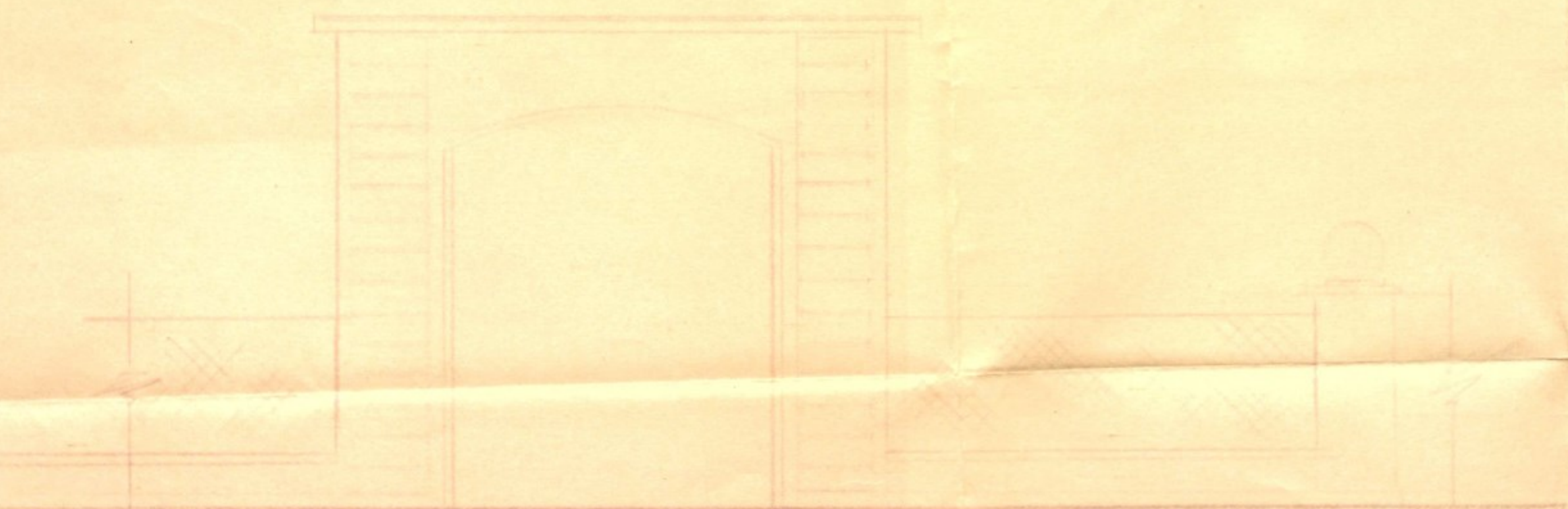
FERNANDO BARQUIN
Y BARON
ARQUITECTO

SEVILLA JULIO 1954

ABQ 10



CALLE



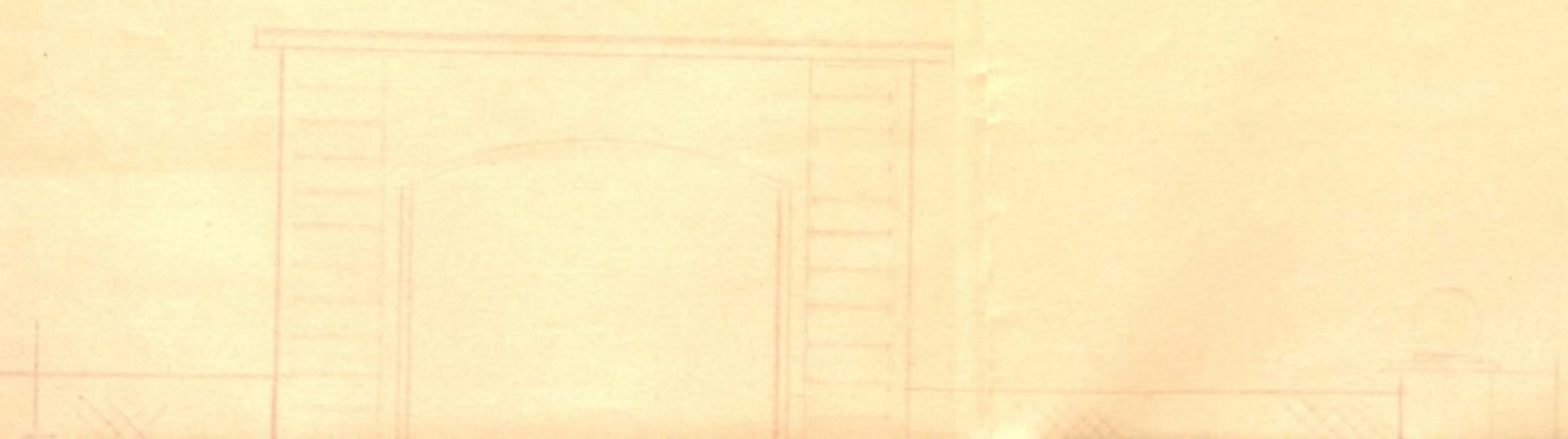
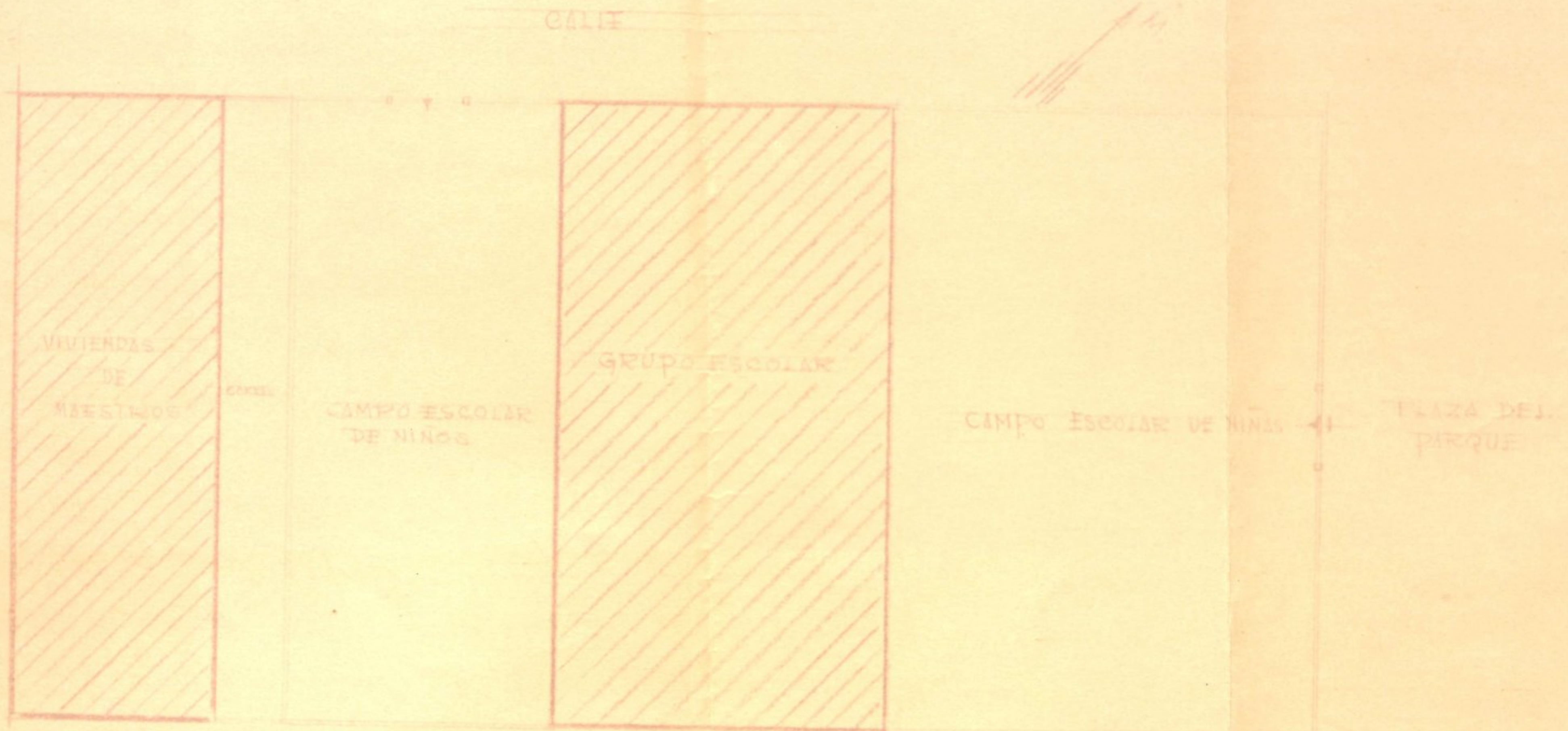
DETALLES DE CERRAMIENTO

ESCALA 1:50

SEVILLA JUNIO 1954
EL ARQTE

FERNANDO BARQUIN
Y BARON
ARQUITECTO

PROYECTO DE GRUPO ESCOLAR Y VIVIENDAS PARA MAESTROS.
PLANO DE EMPLAZAMIENTO
ESCALA 1:200



SEVILLA Junio, 1954
EL ARQUITECTO

FERNANDO BARQUIN
Y BARON